

November Macros Read Me

This file contains the macros described in the WordPerfect Mac News.

How to Install.

For Versions 3.0 and 3.1

1. Open this file.
2. Choose **Preferences** from the Edit menu.
3. Choose the **Librarian** button.
4. Choose **Macros** from the Resource pop-up menu.
5. Select “• **Emboss**” from the right list box and then click **Copy**.
Do the same for “• **White Text/Black Background**”.
6. Click **Done** to close the Librarian.
7. Close the Preferences dialog.

For Version 2.1

1. Open this file.
2. Go to **Preferences** from the File menu, and then choose **Librarian**.
3. Choose **Macros** from the Resource pop-up menu.
4. Select “• **Emboss**” from the right list box and then click **Copy**.
Do the same for “• **White Text/Black Background**”.
5. Click **Done** to close the Librarian.

After installing these macros in the Library, they will show up in your macro list any time you are in WordPerfect.

How to Use.

Emboss by Daniel Midgley

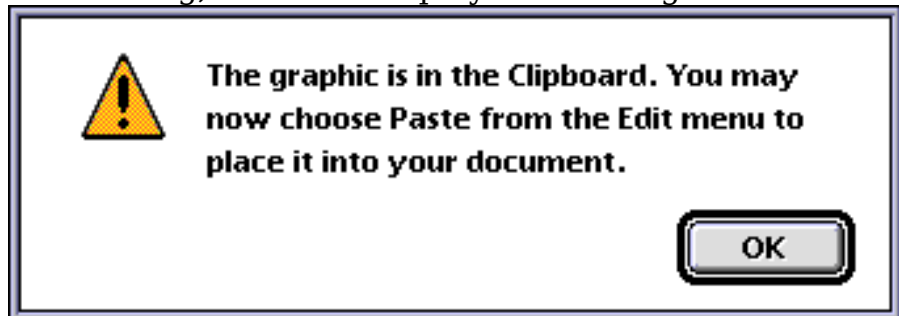
This macro will take your text and change it into a cool embossed graphic, much like the one below.



Here's another example.



All you have to do is highlight some text, and run the macro. WordPerfect will do the embossing, and then display the message below:



Click OK, choose Paste from the Edit menu, and your embossed text will be placed in your document.

The macro does not affect your original document until you decide to Paste. Some tips:


- The embossed graphic looks best when you use larger size fonts (24 pt. and up).
- The bolder the font, the better. (This is what typographers call "text color"; the "darker" fonts look better.)
- Make sure your printer is set to "Color/Grayscale" or the equivalent before printing. The embossed graphic won't print out well on a black and white printer. Of course, it doesn't look great on a black and white monitor, either.

The idea for this macro came from Tips and Tricks mini-magazine by Image Club Graphics. Additional assistance came from Macworld's Macintosh Secrets by Pogue and Schorr. Both are excellent resources.

Typeface Info by Gene Bowley

The Typeface Info macro will allow you generate some sample text, for a given font, in two forms:

1. A typeface waterfall
2. A character map containing all 255 characters.

 This information can be useful if you want to create printed archive of what your fonts look like (see waterfall example below).

Lucida Bright

Font size=2 Sample text:1234567890123 abcdefghi ABCDEFGHI
Font size=3 Sample text:1234567890123 abcdefghi ABCDEFGHI
Font size=4 Sample text:1234567890123 abcdefghi ABCDEFGHI
Font size=5 Sample text:1234567890123 abcdefghi ABCDEFGHI
Font size=6 Sample text:1234567890123 abcdefghi ABCDEFGHI
Font size=7 Sample text:1234567890123 abcdefghi ABCDEFGHI
Font size=8 Sample text:1234567890123 abcdefghi ABCDEFGHI
Font size=9 Sample text:1234567890123 abcdefghi ABCDEFGHI
Font size=10 Sample text:1234567890123 abcdefghi ABCDEFGHI
Font size=11 Sample text:1234567890123 abcdefghi ABCDEFGHI
Font size=12 Sample text:1234567890123 abcdefghi ABCDEFGHI